

# Shrimp with Chili Gravy

Tender, bouncy shrimps accompanied by a delicious chili sauce with the right amount of spiciness.



Enjoy our new, bigger fried shrimp



149

すき家の

**Shrimp  
Chili Gravy Gyudon**

エビチリ牛丼

**M \$8.9** S \$8.2 XM \$10.9  
L \$10.9 XL \$12.9



150

すき家の

**Half Boiled Egg  
Shrimp Chili Gravy  
Gyudon**

温玉エビチリ牛丼

**M \$9.9**

S \$9.2 XM \$11.9  
L \$11.9 XL \$13.9

149

すき家の

**Half Boiled Egg Shrimp  
Chili Gravy Gyudon &  
Clam Miso Soup  
Chicken Karaage Combo**

温玉エビチリ牛丼あさり汁唐揚げセット

**M \$15.9**



# GYUDON

牛丼



RESTAURANT CHAIN - JAPAN  
LONDON 2022/2023  
"Brand of the Year" is used under license from World Branding Forum LLC



100%  
コンヒカリ  
Koshihikari

High Quality  
US BEEF  
100%

## PORTION SIZE

<b>S</b> Beef: 80% of M Size Rice: 65% of M Size	<b>M</b> Standard Size	<b>XM</b> Beef: 165% of M Size Rice: 75% of M Size
<b>L</b> Beef: 125% of M Size Rice: 125% of M Size	<b>XL</b> Beef: 200% of M Size Rice: 125% of M Size	

Our signature gyudon is made with perfectly sliced beef simmered in a sweet and savory shoyu-based sauce made with our secret recipe. It is served on top of delicious, fluffy, and warm Japanese rice.

## Gyudon 100

牛丼 **M \$4.9**  
**S \$4.2 XM \$6.9 L \$6.9 XL \$8.9**

Signature dish of Sukiyaki. Tenderly cooked thin sliced beef simmered in our secret recipe sauce, served with hot and fluffy Japanese rice.

Most popular topping in Japan!

Served with  
Tabasco

108

## Melted Cheese Gyudon

とろーり3種のチーズ牛丼

**M \$7.5**

**S \$6.8 XM \$9.5 L \$9.5 XL \$11.5**

Our triple cheese gyudon with savory melted cheese on top. Japan sukija's current most popular topping.



104

## Kimchi Gyudon

キムチ牛丼

**M \$6.2**

**S \$5.5 XM \$8.2 L \$8.2 XL \$10.2**

The very first and long seller topping of sukija in Japan. Carefully selected kimchi on top of your favorite gyudon.



107

## Half Boiled Egg Gyudon

おん玉牛丼

**M \$5.9**

**S \$5.2 XM \$7.9 L \$7.9 XL \$9.9**

Half boiled egg that matches perfectly and compliments the taste of gyudon.



101

## Half Boiled Egg Spring Onion Gyudon

ねぎ玉牛丼

**M \$6.8**

**S \$6.1 XM \$8.8 L \$8.8 XL \$10.8**

Gyudon with fresh spring onion complimented with sweet and spicy Korean chili pepper sauce and half boiled egg. A very popular menu in Japan.



135

## Grated Daikon Gyudon with Ponzu Sauce

おろしポン酢牛丼

**M \$6.5**

**S \$5.8 XM \$8.5 L \$8.5 XL \$10.5**

We're adding a hit item to our main menu! Enjoy the refreshing and light flavour of Ponzu.



105

## Okra Gyudon with Dashi Sauce

和風だし巻るオクラ牛丼

**M \$6.5**

**S \$5.8 XM \$8.5 L \$8.5 XL \$10.5**

Gyudon with sliced okra. The unique slime coming from okra which contains soluble fiber matches perfectly with our special sauce, giving it a refreshing after taste.



106

## Double Half Boiled Egg Gyudon

ダブルおん玉牛丼

**M \$6.8**

**S \$6.1 XM \$8.8 L \$8.8 XL \$10.8**

2pcs half boiled eggs topping on gyudon, for you who love egg!



100

## Gyudon & Green Veggies Combo

牛丼青菜セット

**M \$6.9**

**S \$6.2 XM \$8.9 L \$8.9 XL \$10.9**



105

## Okra Gyudon with Dashi Sauce & Tofu Combo

オクラ牛丼冷奴セット

**M \$10.0**

**S \$9.3 XM \$12.0 L \$12.0 XL \$14.0**



108

## Melted Cheese Gyudon & Clam Miso Soup Salad Combo

とろーり3種のチーズ牛丼おろし汁サラダセット

**M \$12.5**

**S \$11.8 XM \$14.5 L \$14.5 XL \$16.5**

Prices stated are inclusive of GST. The pictures are only for reference.

## Value Price Combo

すき家のお得なセット



Green Veggies Combo

青菜セット **+\$2.0**

Change to Cream Miso Soup **+\$1.5**



Salad Combo

サラダセット **+\$3.5**

Change to Cream Miso Soup **+\$1.5**



Tofu Combo

冷奴セット **+\$3.5**

Change to Cream Miso Soup **+\$1.5**



Chicken Karaage Combo

からあげセット **+\$4.5**

Change to Cream Miso Soup **+\$1.5**

## Choice of Drink 16oz

- H&E Ice Lemon Tea
- Coca-Cola Original Taste
- Minute Maid Refresh Orange
- Sprite
- Green Tea (ICE/HOT)
- Coca-Cola Zero Sugar
- Dasani Bottled Water

## Recommended Side Menu

- 601 ● Chicken Karaage (5pcs) **\$7.5**
- 604 ● Green Veggies **\$2.0**

# BEEF YAKINIKU BOWL

焼肉丼

100%  
コンヒカリ  
Koshihikari

High Quality  
US BEEF  
100%

PORTION SIZE

**M** Standard Size  
**L** Beef: M Size  
Rice: 125% of M Size  
**XL** Beef: 200% of M Size  
Rice: 125% of M Size

Thick cut beef marinated in our original yakiniku sauce and grilled to perfection. A perfect match for our fluffy and warm carefully selected Japanese rice.

## Beef Yakiniku Bowl 200

焼肉丼  
Rice (L) Extra Meat (Double Portion Rice (L))  
**M \$6.9 L \$7.5 XL \$11.9**

Thick grilled beef with sweet and savory Yakiniku sauce on top of warm Japanese rice.

## 201 Half Boiled Egg Spring Onion Beef Yakiniku Bowl

ねぎ玉焼肉丼  
Rice (L) Extra Meat (Double Portion Rice (L))  
**M \$8.8 L \$9.4 XL \$13.8**

Beef Yakiniku bowl with spring onion and sweet and spicy Korean chili pepper sauce.



208 Melted Cheese Beef Yakiniku Bowl  
とろーり3種のチーズ焼肉丼  
Rice (L) Extra Meat (Double Portion Rice (L))  
**M \$9.5 L \$10.1 XL \$14.5**

Triple cheese Beef Yakiniku bowl with savory melted cheese.



207 Half Boiled Egg Beef Yakiniku Bowl  
おん玉焼肉丼  
Rice (L) Extra Meat (Double Portion Rice (L))  
**M \$7.9 L \$8.5 XL \$12.9**

Beef Yakiniku bowl with half-boiled egg that matches well with the sweet taste of our Yakiniku sauce.



204 Kimchi Beef Yakiniku Bowl  
キムチ焼肉丼  
Rice (L) Extra Meat (Double Portion Rice (L))  
**M \$8.2 L \$8.8 XL \$13.2**

Beef Yakiniku bowl with our original Kimchi.



205 Okra Beef Yakiniku Bowl with Dashi Sauce  
和風だし香るオクラ焼肉丼  
Rice (L) Extra Meat (Double Portion Rice (L))  
**M \$8.5 L \$9.1 XL \$13.5**

Beef Yakiniku bowl with fresh okra and special sauce with refreshing aftertaste.



206 Double Half Boiled Egg Beef Yakiniku Bowl  
ダブルおん玉焼肉丼  
Rice (L) Extra Meat (Double Portion Rice (L))  
**M \$8.8 L \$9.4 XL \$13.8**

2pcs half-boiled eggs for you who love half-boiled eggs on your Beef Yakiniku bowl.



217 Grated Daikon Beef Yakiniku Bowl with Ponzu Sauce  
おろしポン酢焼肉丼  
Rice (L) Extra Meat (Double Portion Rice (L))  
**M \$8.5 L \$9.1 XL \$13.5**

We're adding a hit item to our main menu! Enjoy the refreshing and light flavour of Ponzu.



Recommended set

207 Half Boiled Egg Beef Yakiniku Bowl & Salad Combo  
おん玉焼肉丼サラダセット  
Rice (L) L \$12.0 Extra Meat (Double Portion Rice (L)) XL \$16.4



Recommended set

208 Melted Cheese Beef Yakiniku Bowl & Green Veggies Combo  
とろーり3種のチーズ焼肉丼青菜セット  
Rice (L) L \$12.1 Extra Meat (Double Portion Rice (L)) XL \$16.5



Recommended set

200 Beef Yakiniku Bowl & Clam Miso Soup Chicken Karaage Combo  
焼肉丼あさり汁からあげセット  
Rice (L) L \$13.5 Extra Meat (Double Portion Rice (L)) XL \$17.9

Prices stated are inclusive of GST. The pictures are only for reference.

## Value Price Combo すき家のお得なセット



Green Veggies Combo  
青菜セット +\$2.0  
Change to Clean Menu (over) +\$1.5



Salad Combo  
サラダセット +\$3.5  
Change to Clean Menu (over) +\$1.5



Tofu Combo  
冷奴セット +\$3.5  
Change to Clean Menu (over) +\$1.5



Chicken Karaage Combo  
からあげセット +\$4.5  
Change to Clean Menu (over) +\$1.5

## Choice of Drink 16oz

- H&E Ice Lemon Tea (A)
- Coca-Cola Original Taste (B)
- Minute Maid Refresh Orange (B)
- Sprite (B)
- Green Tea (ICE/HOT) (A)
- Coca-Cola Zero Sugar (B)
- Dasani Bottled Water (A)

## Recommended Side Menu

- 601 ● Chicken Karaage (Specs) 7.5  
からあげ5個
- 604 ● Green Veggies 2.0  
青菜

# Japanese CURRY

すき家オリジナルの日本カレー

100%  
コシヒカリ  
Koshihikari

## PORTION SIZE

**S** Curry: 50% of M Size  
Rice: 65% of M Size

**M** Standard Size

**L** Curry: 150% of M Size  
Rice: 125% of M Size

In Japan, it is the most beloved food by locals. Please enjoy Japanese authentic curry rice in our original recipe!

303

## Beef Curry Rice

牛あいがけカレー

**M \$8.9** S \$8.3 L \$10.8

Sukiya's original authentic curry rice with beef topping.

301

## Chicken Karaage Curry Rice

からあげカレー

**M \$9.9** S \$9.3 L \$11.8

Curry rice with juicy Chicken Karaage.

302

## Beef & Triple Cheese Curry Rice

牛あいがけ3種のチーズカレー

**M \$10.3** S \$9.7 L \$12.2

Curry rice with double toppings: beef and triple cheese.

304

## Beef Yakiniku Curry Rice

焼肉カレー

**M \$11.3** S \$10.7 L \$13.2

Curry rice with our original Yakiniku.

305

## Deluxe Curry Rice

DXカレー

**M \$13.3** S \$12.7 L \$15.2

Sukiya's authentic Japanese curry with beef, Chicken Karaage, and half boiled egg on top.

307

## Half Boiled Egg Curry Rice

おん玉カレー

**M \$7.3** S \$6.7 L \$9.2

Curry rice with half boiled egg topping.

300

## Curry Rice

カレー

**M \$6.3** S \$5.7 L \$8.2

Sukiya's original Japanese authentic curry rice.

Recommended set

303

## Beef Curry Rice & Salad Combo

牛あいがけカレーサラダセット

**M \$12.4**

S \$11.8 L \$14.3

Recommended set

307

## Half Boiled Egg Curry Rice & Chicken Karaage Combo

おん玉カレーからあげセット

**M \$11.8**

S \$11.2 L \$13.7

Recommended set

301

## Chicken Karaage Curry Rice & Green Veggies Combo

からあげカレー青菜セット

**M \$11.9**

S \$11.3 L \$13.8

Prices stated are inclusive of GST. The pictures are only for reference.

## Value Price Combo

すき家のお得なセット

**Green Veggies Combo**  
青菜セット **+\$2.0**

Change to Cream Hot Sauce **+\$1.5**

**Salad Combo**  
サラダセット **+\$3.5**

Change to Cream Hot Sauce **+\$1.5**

**Tofu Combo**  
冷奴セット **+\$3.5**

Change to Cream Hot Sauce **+\$1.5**

**Chicken Karaage Combo**  
からあげセット **+\$4.5**

Change to Cream Hot Sauce **+\$1.5**

## Choice of Drink 16oz

- H&E Ice Lemon Tea
- Coca-Cola Original Taste
- Minute Maid Refresh Orange
- Sprite
- Green Tea (ICE/HOT)
- Coca-Cola Zero Sugar
- Dasani Bottled Water

## Recommended Side Menu

- G01**  
● Chicken Karaage (Specs) **\$7.5**  
からあげ(1個)
- G04**  
● Green Veggies **\$2.0**  
青菜

# CHARCOAL GRILLED CHICKEN YAKITORI BOWL

焼き鳥丼

100%  
コシヒカリ  
Koshihikari

PORTION SIZE

M Standard Size  
L Chicken: M Size  
Rice: 125% of M Size  
XL Chicken: 200% of M Size  
Rice: 125% of M Size

Literally means "Charcoal grilled chicken", it's originally served with skewers. Juicy and tender chicken thighs in sweet sauce and all charred flavor, it's a favorite street food in Japan.

400

## Charcoal Grilled Chicken Yakitori Bowl

焼き鳥丼

M \$6.2 L \$6.8 XL \$11.2

Charcoal grilled chicken in our special Yakitori sauce.

Recommended set



407

## Half Boiled Egg Yakitori Bowl & Green Veggies Combo

おん玉焼き焼鳥丼セット

M \$9.2 L \$9.8 XL \$14.2

406

## Double Half Boiled Egg Chicken Yakitori Bowl

ダブルおん玉焼き鳥丼

M \$8.1 L \$8.7 XL \$13.1

Chicken Yakitori bowl with double half boiled eggs.

408

## Melted Cheese Chicken Yakitori Bowl

とろーり3種のチーズ焼鳥丼

M \$8.8 L \$9.4 XL \$13.8

Sweet and savory charcoal grilled Chicken Yakitori bowl with shredded and melted cheese toppings.

404

## Kimchi Chicken Yakitori Bowl

キムチ焼き鳥丼

M \$7.5 L \$8.1 XL \$12.5

Chicken Yakitori bowl with kimchi topping.

407

## Half Boiled Egg Chicken Yakitori Bowl

おん玉焼き鳥丼

M \$7.2 L \$7.8 XL \$12.2

Chicken Yakitori bowl with half boiled egg topping.

# CHICKEN KARAAGE BOWL

からあげ丼

100%  
コシヒカリ  
Koshihikari

PORTION SIZE

M Standard Size  
L Chicken: M Size  
Rice: 125% of M Size  
XL Chicken: 200% of M Size  
Rice: 125% of M Size

Karaage is bite sized Japanese style fried chicken marinated in soy sauce. It's a dish beloved by locals of all ages.

410

## Chicken Karaage Bowl

からあげ丼

M \$6.9 L \$7.5 XL \$11.9

Sukiya's juicy chicken Karaage served with warm Japanese rice and half boiled egg on top.

Recommended set



410

## Chicken Karaage Bowl & Salad Combo

からあげ丼サラダセット

M \$10.4 L \$11.0 XL \$15.4

416

## Double Half Boiled Egg Chicken Karaage Bowl

ダブルおん玉からあげ丼

M \$7.8 L \$8.4 XL \$12.8

Chicken Karaage bowl with double half boiled eggs.



411

## Kimchi Chicken Karaage Bowl

キムチからあげ丼

M \$8.2 L \$8.8 XL \$13.2

Chicken Karaage bowl with kimchi topping.



415

## Melted Cheese Chicken Karaage Bowl

とろーり3種のチーズからあげ丼

M \$9.5 L \$10.1 XL \$14.5

Juicy chicken Karaage bowl with shredded and melted cheese toppings.

Prices stated are inclusive of GST. The pictures are only for reference.

## Value Price Combo

すき家のお得なセット



Green Veggies Combo

青菜セット +\$2.0



Salad Combo

サラダセット +\$3.5



Tofu Combo

冷奴セット +\$3.5



Chicken Karaage Combo

からあげセット +\$4.5

## Choice of Drink 16oz

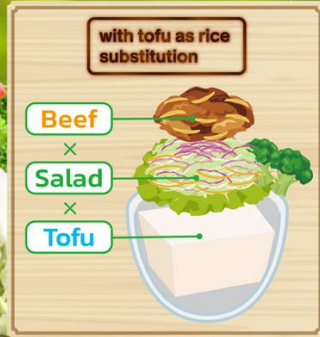
- H&E Ice Lemon Tea
- Coca-Cola Original Taste
- Minute Maid Refresh Orange
- Sprite
- Green Tea (ICE/HOT)
- Coca-Cola Zero Sugar
- Dasani Bottled Water

## Recommended Side Menu

- 601 ● Chicken Karaage (5pcs) からあげ5個 \$7.5
- 604 ● Green Veggies 青菜 \$2.0

# LOW CARB BOWL

ローカーボ丼



130  
**Low Carb Gyudon**

ローカーボ牛丼 **M \$5.9**

Lower in calories  
Gyudon with tofu as rice substitution with salad and sesame dressing. A healthier option for your meal.

Topping options available.

134  
**Low-Carb Chicken Yakitori Bowl**

ローカーボ焼き鳥丼 **M \$6.9**

Chicken Yakitori bowl with tofu as rice substitution.



133  
**Kimchi Low Carb Gyudon**

キムチローカーボ牛丼 **M \$7.2**

Low carb gyudon with kimchi.



132  
**Okra Low Carb Gyudon with Dashi Sauce**

和風だし香るオクラローカーボ牛丼

**M \$7.5**

Low carb gyudon with okra topping. An option with more vegetables.

# TERIYAKI SALMON BOWL

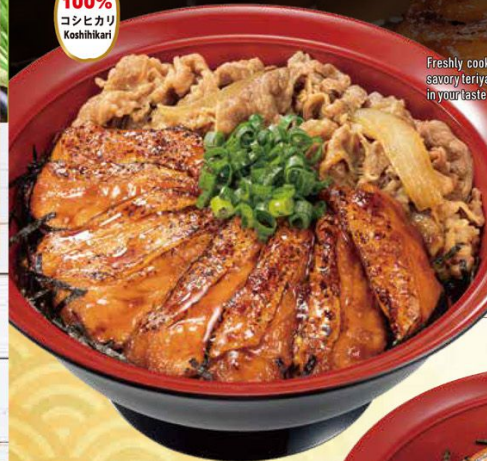
照焼サーモン丼

100%  
コシヒカリ  
Koshihikari

PORTION SIZE

M Standard Size  
L Salmon: M  
Rice: 125% of M Size

Freshly cooked Norwegian salmon, coated in Sukiya's special sweet and savory teriyaki sauce. It's full of umami and will surely hit all the right notes in your taste buds.



425  
**Teriyaki Salmon Bowl with Beef**

牛あいがけ照焼サーモン丼

**M \$14.9** **L \$15.5**

Teriyaki Salmon bowl with Sukiya's signature simmered beef.

426  
**Half Boiled Egg Teriyaki Salmon Bowl**

温玉照焼サーモン丼

**M \$13.4** **L \$14.0**

Teriyaki Salmon bowl with half boiled egg topping.



428  
**Half Boiled Egg Teriyaki Salmon Bowl with Beef**

温玉牛あいがけ照焼サーモン丼

**M \$15.9** **L \$16.5**

Teriyaki Salmon bowl with Sukiya's signature simmered beef and half boiled egg.



429  
**Double Teriyaki Salmon Bowl**

ダブル照焼サーモン丼

**M \$20.9** **L \$21.5**

A double portion Teriyaki Salmon, double the pleasure!



427  
**Teriyaki Salmon Bowl**

照焼サーモン丼

**M \$12.4** **L \$13.0**

Freshly cooked salmon in sweet and savory shiny Teriyaki glaze.

## Value Price Combo すき家のお得なセット

Green Veggies Combo  
再食セット **+\$2.0**

Salad Combo  
サラダセット **+\$3.5**

Chicken Karaage Combo  
からあげセット **+\$4.5**

Tofu Combo  
豆腐セット **+\$3.5**

## Choice of Drink 16oz

- H&E Ice Lemon Tea
- Coca-Cola Original Taste
- Minute Maid Refresh Orange
- Sprite
- Green Tea (ICE/HOT)
- Coca-Cola Zero Sugar
- Dasani Bottled Water

## Recommended Side Menu

- 601 Chicken Karaage (5pcs) からあげ5個 **\$7.5**
- 604 Green Veggies 再食 **\$2.0**

Prices stated are inclusive of GST. The pictures are only for reference.

# MEAT COMBINATION BOWL

肉あげ丼



100%  
コシヒカリ  
Koshihikari

For you who want to enjoy more than one kind of meat! Choose from our signature beef, beef yakiniku, and yakitori for a deluxe rice bowl with double topping!

500 Beef & Yakiniku

## Gyudon/ Beef Yakiniku Combination Bowl

牛肉/焼肉あげ丼

M \$9.9 L \$10.5

Beef and Beef Yakiniku double topping.



502 Yakiniku & Yakitori

## Beef Yakiniku/ Chicken Yakitori Combination Bowl

焼肉/焼き鳥あげ丼

M \$10.9 L \$11.5

Beef Yakiniku and charcoal grilled Chicken Yakitori double topping.

501 Beef & Yakitori

## Gyudon/ Chicken Yakitori Combination Bowl

牛肉/焼き鳥あげ丼

M \$8.9 L \$9.5

Beef and charcoal grilled Chicken Yakitori double topping.



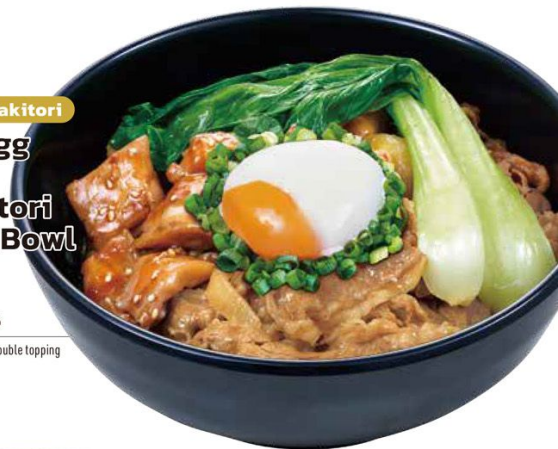
504 Beef & Yakitori

## Half Boiled Egg Gyudon/ Chicken Yakitori Combination Bowl

おん玉牛肉/焼き鳥あげ丼

M \$9.9 L \$10.5

Beef and charcoal grilled Chicken Yakitori double topping with half boiled egg.



503 Beef & Yakiniku

## Half Boiled Egg Gyudon/ Beef Yakiniku Combination Bowl

おん玉牛肉/焼肉あげ丼

M \$10.9 L \$11.5

Beef and Beef Yakiniku double topping with half boiled egg.



505 Yakiniku & Yakitori

## Half Boiled Egg Beef Yakiniku/ Chicken Yakitori Combination Bowl

おん玉焼肉/焼き鳥あげ丼

M \$11.9 L \$12.5

Beef Yakiniku and charcoal grilled Chicken Yakitori double topping with half boiled egg.

Prices stated are inclusive of GST. The pictures are only for reference.

### Value Price Combo

すき家のお得なセット



Green Veggies Combo

商業セット +\$2.0



Change to Cream Hot Soup +\$1.5



Salad Combo

サラダセット +\$3.5



Change to Cream Hot Soup +\$1.5



Tofu Combo

冷奴セット +\$3.5



Change to Cream Hot Soup +\$1.5



Chicken Karaage Combo

からあげセット +\$4.5



Change to Cream Hot Soup +\$1.5

### Choice of Drink 16oz

- H&E Ice Lemon Tea
- Coca-Cola Original Taste
- Minute Maid Refresh Orange
- Sprite
- Green Tea (ICE/HOT)
- Coca-Cola Zero Sugar
- Dasani Bottled Water

### Recommended Side Menu

- 601 ● Chicken Karaage (5pcs) からあげ5個 \$7.5
- 604 ● Green Veggies 商業 \$2.0

# SIDE DISH

サイドメニュー



## 601 Chicken Karaage

(3pcs) からあげ 3個 **\$4.5**  
 (5pcs) からあげ 5個 **\$7.5**  
 (10pcs) からあげ10個 **\$14.0**  
 (15pcs) からあげ 15個 **\$20.0**



## 600 Beef Plate

牛肉 **\$4.0**  
 Double Portion 倍量 **\$8.0**



## 602 Beef Yakiniku Plate

焼肉皿 **\$6.0**  
 Double Portion 倍量 **\$12.0**



## 603 Yakitori Plate

焼き鳥皿 **\$5.0**  
 Double Portion 倍量 **\$10.0**



## 620 Teriyaki Salmon Plate

照焼サーモン皿 **\$11.4**  
 Double Portion 倍量 **\$22.8**



## 604 Green Veggies

青菜 **\$2.0**



## 605 Salad

サラダ **\$3.5**



## 624 Clam Miso Soup

あさり汁 **\$3.5**



## 628 Tofu

冷奴 **\$3.5**

## 606 Kimchi キムチ ..... \$1.5

## 607 Half Boiled Egg おん玉 ..... \$1.5

## 608 Okra オクラ ..... \$1.8

## 609 Spring Onion 青ねぎ ..... \$1.0

## 611 Miso Soup みそ汁 ..... \$1.8

## 610 Rice ごはん ..... M \$2.0 L \$2.8

### Drink ドリンク

650 H&E Ice Lemon Tea レモンティー ..... **\$2.8** (C) (8oz) (10oz)  
 741 Green Tea (ICE/HOT) グリーンティー ..... **\$2.8** (A) (10oz)

651 Coca-Cola Original Taste コーラ ..... **\$2.3** (C) (8oz) (10oz)  
 655 Minute Maid Refresh Orange ミニマードリフ ..... **\$2.7** (C) (7oz)

652 Coca-Cola Zero Sugar コーラゼロ ..... **\$2.3** (B) (8oz) (10oz)  
 654 Dasani Bottled Water 水(ボトル) ..... **\$2.0** (A) (9oz)

653 Sprite スプライト ..... **\$2.3** (B) (5oz) (10oz)

Nutri-Grade (A B C D) Nutri-Grade is based on default preparation (before addition of ice)

### KIDS MEAL

お子様セット

450 Kids Beef Plate お子様焼肉丼 **\$6.5** (C) (10oz)  
 451 Kids Chicken Karaage Plate お子様からあげ丼 **\$6.5** (C) (10oz)

# Sukiya's Drink

No ice option is available with +\$1.0 of additional charge.

## YUZU

748 Earl Grey Yuzu Tea 柚子紅茶 **\$3.8** (B) (5oz)  
 749 Matcha Yuzu Tea 柚子抹茶 **\$4.3** (B) (5oz)

Nutri-Grade (A B C D) Nutri-Grade is based on default preparation (before addition of ice)

### Milk Tea

Sugar level | None (0%) | Less (50%) | Regular (100%)

100% Uji Matcha  
 700 Uji Matcha Latte 宇治抹茶ラテ **\$4.5** (C) (4oz)  
 703 Earl Grey Tea Latte 紅茶ラテ **\$3.8** (C) (3oz)

Nutri-Grade (A B C D) Nutri-Grade is based on preparation at 100% sugar (before addition of ice)

### Peach Tea

Sugar level | None (0%) | Less (50%) | Regular (100%)

100% Uji Matcha  
 716 Matcha Peach Tea 抹茶ピーチティー **\$4.3** (C) (10oz)  
 715 Earl Grey Peach Tea アールグレイピーチティー **\$3.8** (C) (10oz)

Nutri-Grade (A B C D) Nutri-Grade is based on preparation at 100% sugar (before addition of ice)





# What is Gyudon?

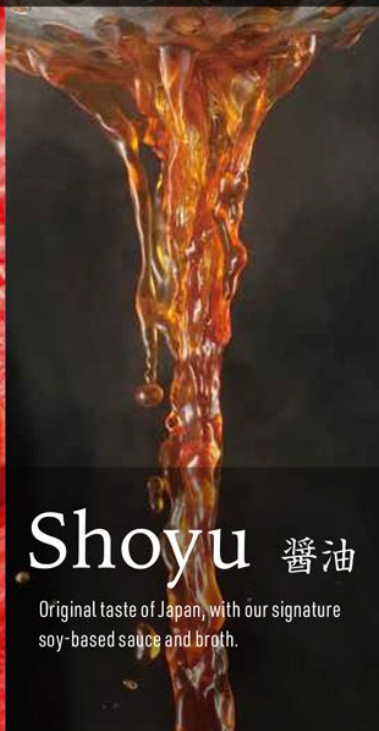
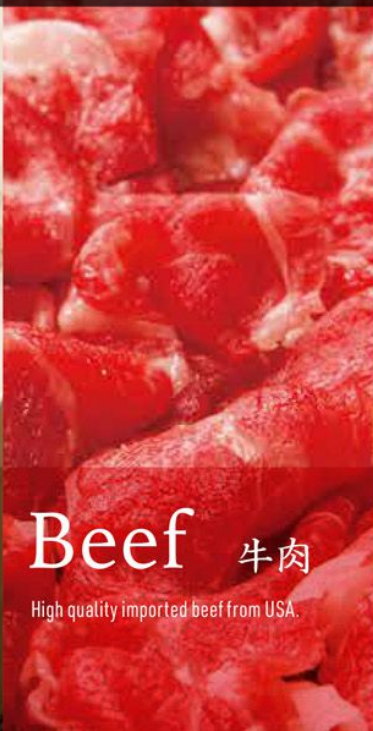
Koshihikari short grain rice with a superb texture and mild sweetness that brings out the true flavor of the ingredients.

Tender beef and fresh onion simmered to perfection.

Fragrant and sweet shoyu-based sauce.

Sukiya has created a dish that embodies the essence of Japanese food, with a taste that will take you all the way to Japan.

## From The Best Ingredients



### Rice 米

100% Japanese koshihikari, a carefully selected short-grain rice for gyudon. Soft, moist, springy and slightly sweet.

### Beef 牛肉

High quality imported beef from USA.

### Shoyu 醤油

Original taste of Japan, with our signature soy-based sauce and broth.

## Service



Sukiya is committed to providing 120% of customer service satisfaction. Firstly, table service. Even with our fast food system, we promise to provide a dining experience like any other restaurant without taking service charge. Second, quick service. Our motto is to serve a hearty meal as quickly as possible for our customer to enjoy.

## BRAND OF THE YEAR

"Brand of the Year" is awarded to the year's best brands by the highly regarded and UK-based World Branding Forum.

Brands are selected by public voting and market research.

Sukiya has been awarded "Brand of the Year" for eight runnings since 2016.



RESTAURANT CHAIN - JAPAN  
LONDON 2023-2024

"Brand of the Year" is used under license from World Branding Forum CIC



## SUKIYA

Sukiya was first opened in 1982 and has maintained our quality of beef ever since. Now we have expanded to 1,952 stores in Japan alone, making us the biggest gyudon chain nationwide. We are committed into quality control to serve a hygienic, safe, delicious, and affordable gyudon. Now we have various options for everyone's preference. No matter whether you are dining alone, with family, or friends, we promise to offer the best dining experience.

\*1,952 stores as of 31th December 2023

Follow Us on Social Media



Prices stated are inclusive of GST.